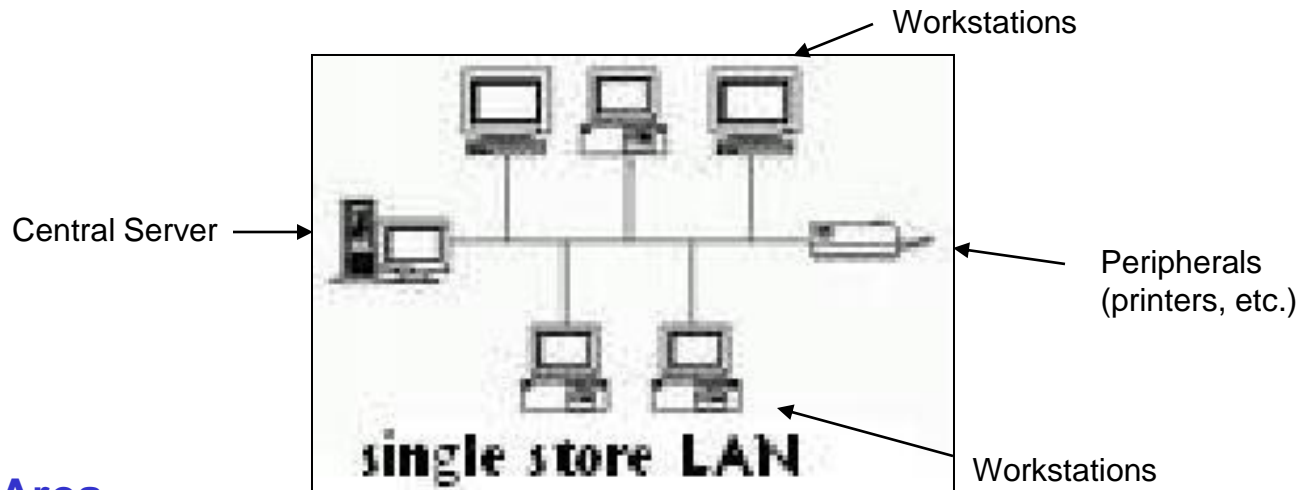


Single Store Installation

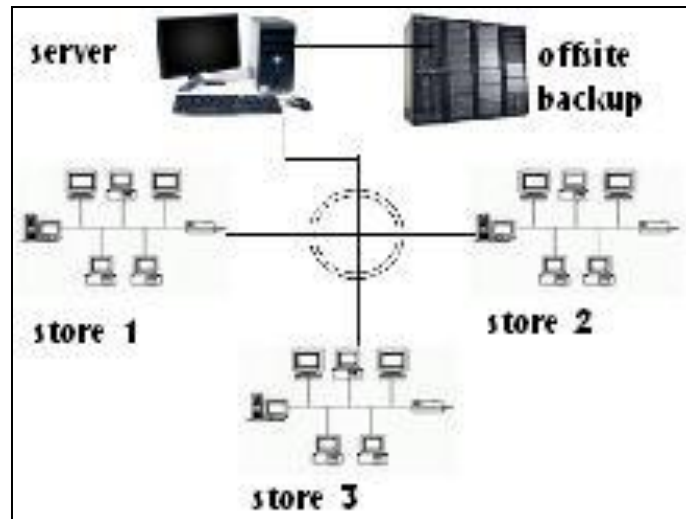
What we normally do...



LAN = Local Area Network = a computer network covering a small physical area, such as a pawn shop.

Multi-Store Installation

For more than one store ...

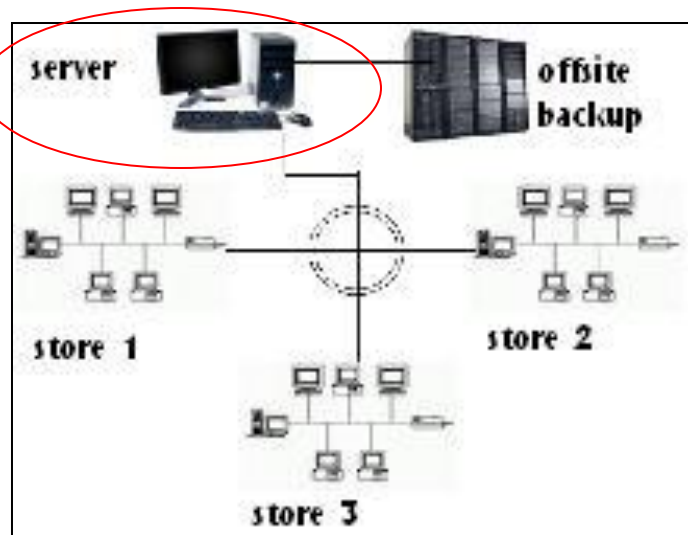


WAN = Wide Area Network = is a computer network that covers a broad area (i.e., any network whose communications links cross metropolitan, regional, or national boundaries.)

WANs are used to connect LANs and other types of networks together, so that users and computers in one location can communicate with users and computers in other locations.

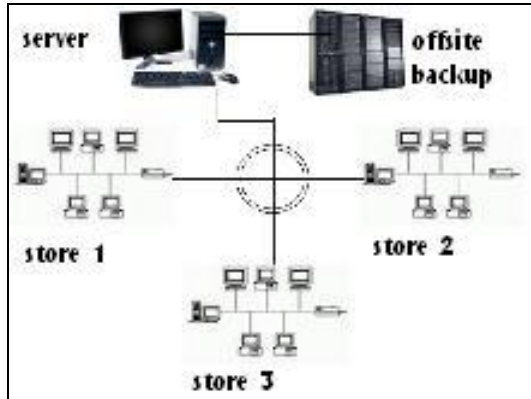
Multi-Store Installation

This server houses data from all your stores.



SQL= Structured Query Language = the database used by Data Age/PawnMaster.

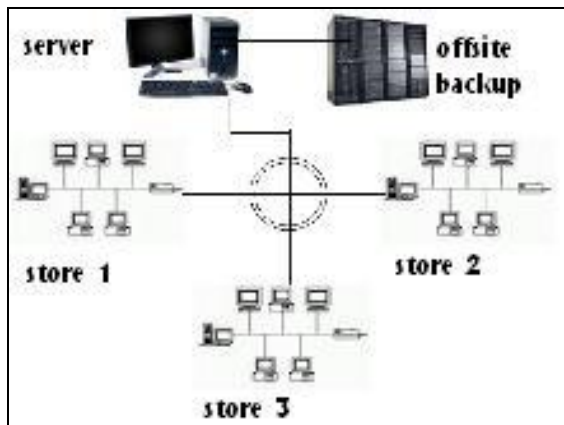
Multi-Store Installation – Must Haves



MUST HAVES:

1. If you want stores to share data, you must have a central server and database.
2. They must be networked through a WAN. The Internet.
3. Each store must have a store number between 1 and 999.
4. Each multi-store installation must have a store 1.

Multi-Store Installation – Internet Concerns



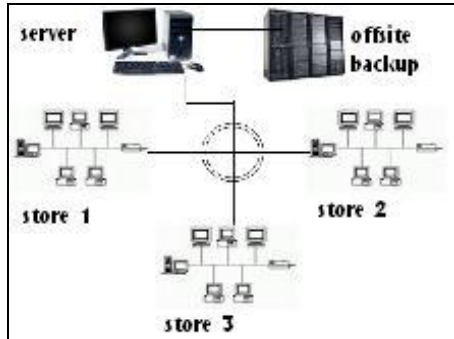
Download speeds should be a minimum of 4-5 kilobits per second (kbit/s) and upload speeds will vary, depending on the server setup and size. And, database size will affect how fast the speed of the transactions will be if they are on a slow server.

Do you have an in-house IT staff person or do you hire a consultant to handle your IT?

Where do you want the server to be located?
What store?

Where in the store? Or is it offsite completely?

Multi-Store Installation - Alternatives



Is an alternative such as a remote software program (PC Anywhere, MS Windows built-in software called the Remote Desktop feature, LogMeIn, etc.) a possible solution to the customer's issues? You can access the store's other computer system(s) and perhaps get the information for which you are looking for.

BUT...REMEMBER! Remote software takes over the workstation, thus making it unavailable to the store's employees while the system is being accessed. Be careful with this idea and using it for remote processes.

Multi-Store Installation - Terms

Key Terms

Enterprise Multi-Store Management Tools – This is an add-on product by Data Age.

Client/Server – A network architecture in which each computer is either a client or a server. Clients rely on servers for resources, such as files and devices. In our case, the database is on the server.

Database Server – Related to above. The computer that houses the database is referred to as the “database server.”

SQL – Structured Query Language - the database used by Data Age/PawnMaster.

Citrix - A server solution that uses Microsoft Terminal Services software to deliver Windows applications to PCs, Apple Macintosh computers, X terminals and UNIX workstations. This enables users of those systems to access and use those programs which are available to those using the Windows operating system.

Terminal Services – In networking, a terminal is a computer or workstation connected to a server. Can also refer to the Microsoft product, Microsoft Terminal Services, designed to run Windows applications.

Multi-Store Installation - Terms

Key Terms

Remote Connection – In networking, *remote* refers to files, devices, and other resources that are not connected directly to your workstation. Resources at your workstation are considered local.

VPN – Virtual Private Network – a network that is constructed by using public wires to connect nodes. For example, there are a number of systems that allow you to create networks using the Internet as the medium for transporting data.